

FIRST LOOK



An apartment block fronts the high street while three townhouses at the rear provide family accommodation.

Platform 5's Garden City brings open space to high street homes

Platform 5 Architects has submitted a planning application for a £2 million mixed-use scheme in Wanstead, north-east London.

The Garden City will replace an under-used building next to the Jacobean-style George Hotel.

The existing building, consisting of a three-storey front block and two-storey shed extension at the back, will be completely demolished.

In the new building, the existing occupant — a successful Vietnamese restaurant — will be retained across the entire ground floor. This will act as a "podium" supporting nine homes on the upper levels arranged around a first floor communal garden.

The block fronting onto the High Street contains one and two bed apartments while at the back of the site three townhouses provide family accommodation.



The architects have opened up a courtyard space between the front and rear parts of the scheme.

Patrick Michell, a partner at Platform 5, said the premise of the scheme was to add good quality residential space, including townhouses, and external space in the form of roof terraces or gardens.

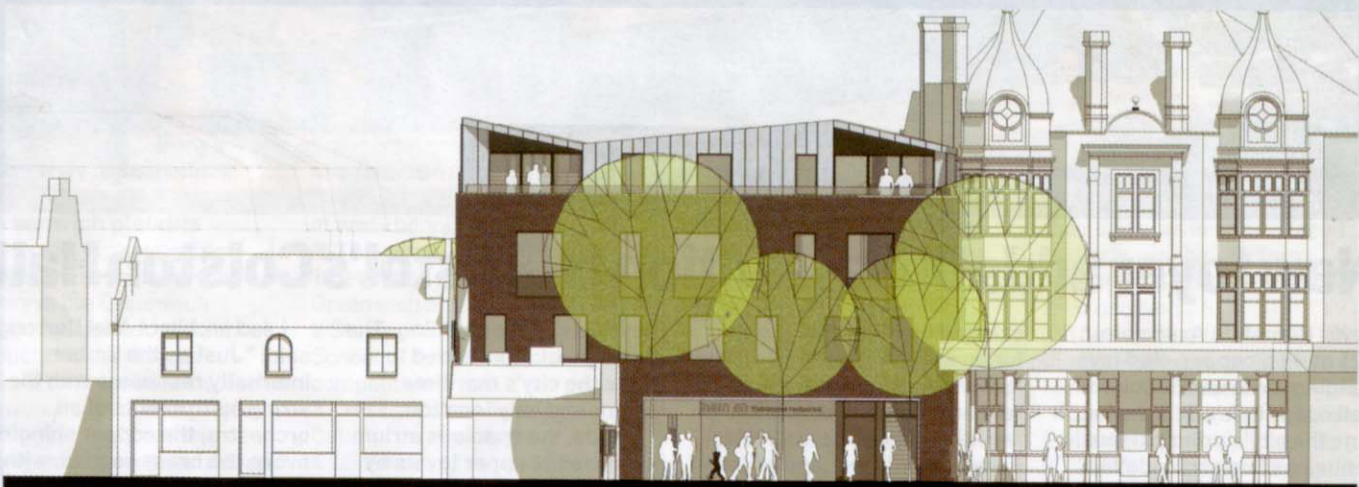
"Previously there was no green space on the site, but by

stacking two blocks the designers aim to open up a courtyard space," he said.

The contrast between the courtyard and the busy high street is reflected in the materials — a robust brick facade with simple openings faces onto the street, whereas

sweet chestnut timber lines the interior of the courtyard, cladding the projecting balconies and facades of the townhouses.

A decision is expected from Redbridge Council in October. Construction work would start in spring 2010.



The new building, with a Vietnamese restaurant on its ground floor level, is next to the George Hotel on Wanstead High Street.