

MEADOWVIEW, BEDFORDSHIRE PLATFORM 5 ARCHITECTS

Specified products

Insulated render StoTherm Classic external wall insulation system mechanically fixed on track, Colour 37111, off white with StoLotusan K1.5 self-cleaning finish

Galvanised steel gabion cages Hy-ten 4mm gauge with steel wind-post supports

Gabion stones, Ironstone from the Banbury Quarry. Supplied by Bennie Stones

Acoustic seals to screens Häfele, Sealmaster bulb seal (950.21.042), brush seal top and bottom (950.07.269)

Rio Neblina cleft slate tiles Kirkstone

Sweet chestnut cladding, stainless steel fixings, glued mitred corners

Inwood Developments

Olive ash engineered flooring Admonter flooring, with 3 coats white UV cured oil. Supplied by Go Direct Flooring

30mm Emerald Pearl granite kitchen worktop Butterfield Natural Stone

Internal paint finish Dulux Trade Emulsion

Colour: Russian Velvet 2

Spray laquer finish to MDF joinery and doors

Paintworks, RAL 9010, semi-matt finish

Satin stainless steel lever handles

Allgood Modric

Fluorescent strip lights with anodised aluminium finish Delta Light Microline 50

Windows Velfac System 200 composite windows with laminated pinewood frames and PPC aluminium sash, colour RAL 7016.

Right External finishes include ironstones in gabion cages, sweet chestnut cladding and a slate plinth
Opposite top The horizontal emphasis and datums of the house responds to the surrounding landscape
Opposite below Internal finishes include slate flooring, timber boarding and Russian Velvet emulsion



Project details

Client Private client

Main contractor BMH Construction

Quantity surveyor Jenkins Hansford Partnership

Structural engineer Michael Baigent Orla Kelly

Landscape architect Graham Pavey

Form of contract JCT Intermediate Building

Contract with contractor's design Rev 2007

Construction cost £560,000

Landscaping cost £60,000

Budget cost/m² £1,750

Start on site October 2007

Practical completion of house November 2008

Completion of landscaping May 2010

Annual CO₂ emissions 20.9 kg CO₂/m²

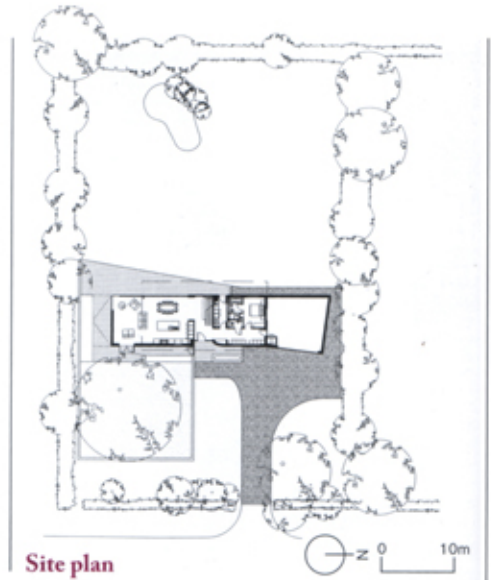
The house, situated on the edge of a rural village in Bedfordshire, was designed as a family home for a retired couple. The abstract nature of the surrounding flat agricultural landscape and vernacular buildings have informed the design of the house, resulting in a simple linear form with a horizontal emphasis. Different datums that control the views of the gardens and landscape have been marked across the site by the horizontal layers of the slate plinth, white render, timber cladding and gabion stone wall.

Patrick Michell, partner,
Platform 5 Architects



MEADOWVIEW, BEDFORDSHIRE PLATFORM 5 ARCHITECTS

1. Entrance hall
2. Open-plan kitchen dining
3. Living room
4. Utility room
5. Guest bedroom
6. Garage
7. Seating area
8. Master bedroom
9. Dressing room
10. Ensuite
11. Terrace
12. Bedroom 2
13. Bedroom 3
14. Study
15. Double-height void



Site plan



First-floor plan



Ground-floor plan



**MEADOWVIEW,
BEDFORDSHIRE
PLATFORM 5
ARCHITECTS**

Below The Russian Velvet emulsion paint finish was chosen to complement the grey-green cleft slate flooring

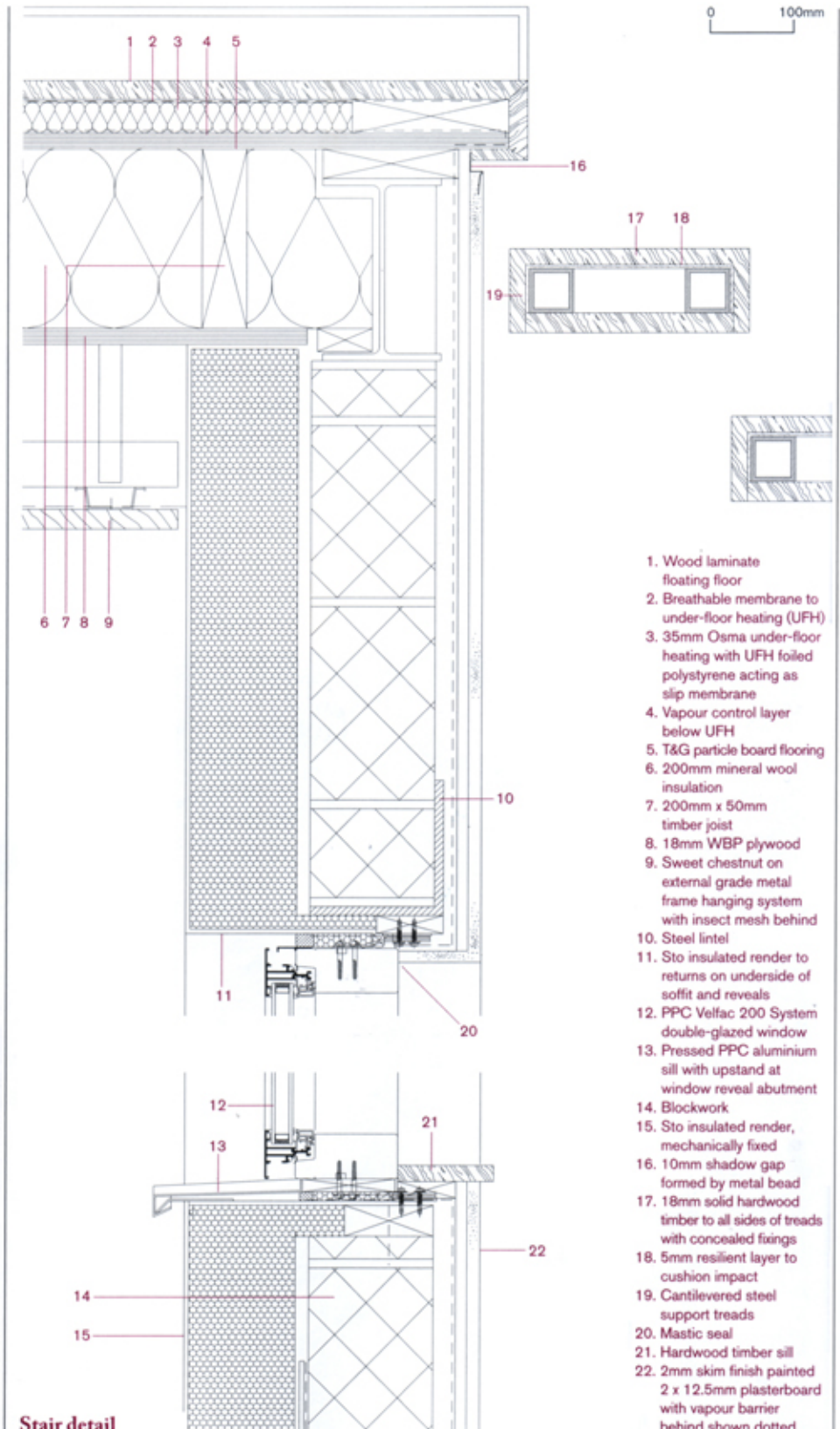


MEADOWVIEW, BEDFORDSHIRE PLATFORM 5 ARCHITECTS

Below Stair treads cantilever from the double-height end wall

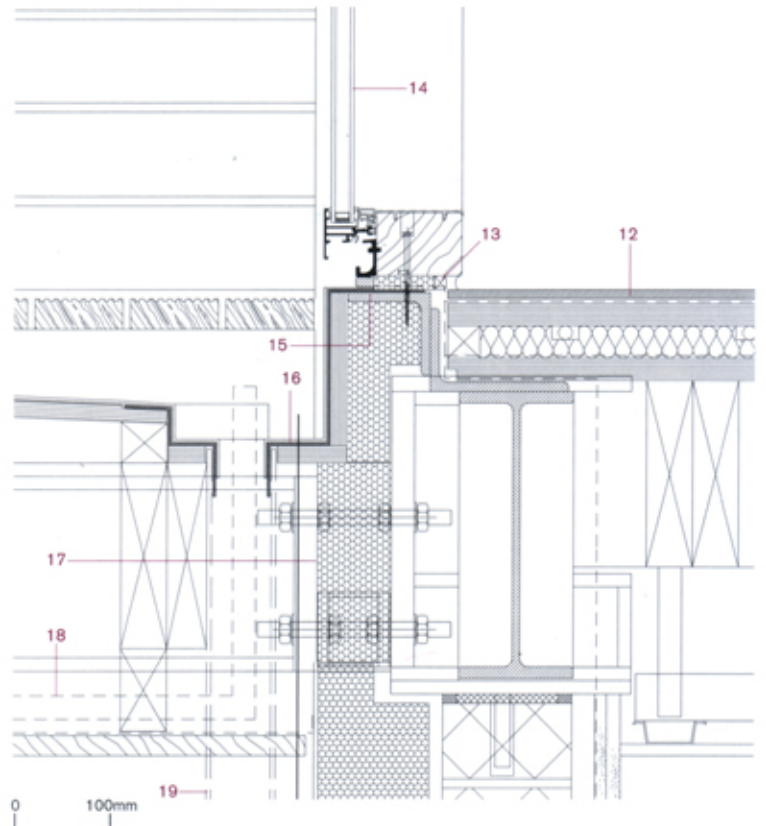
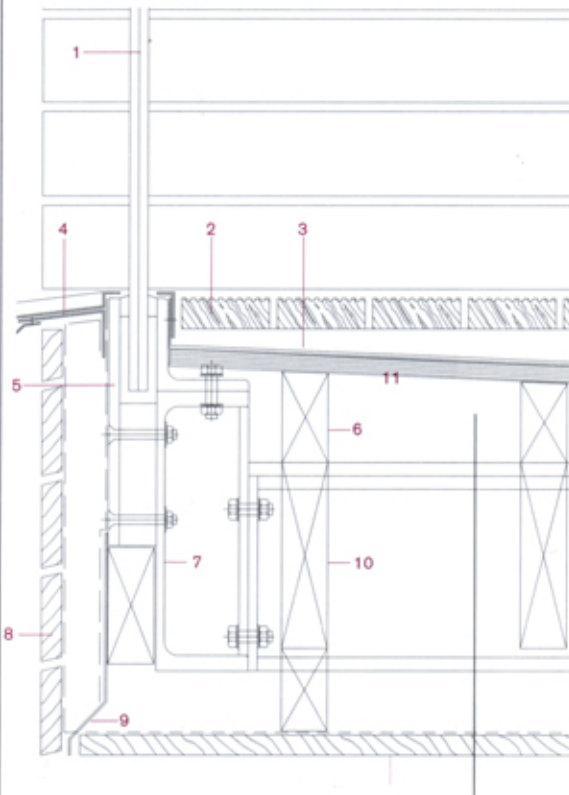


ALAN WILLIAMS



MEADOWVIEW, BEDFORDSHIRE PLATFORM 5 ARCHITECTS

1. Laminated toughened glass balustrade with aluminium protective strip to exposed edges
2. Grooved sweet chestnut decking laid on hardwood cross firings at 400mm centres; firings rest on membrane only. Decking to be removed in panels, providing access to gutter
3. Single-ply membrane laid on 18mm marine ply decking
4. PPC aluminium sill by Finish Architecture
5. Glass balustrade set in Arbokol in channel formed by galvanized plate and RSA
6. Treated softwood firings fixed between joists and marine ply decking
7. Galvanised support steelwork
8. Sweet chestnut timber rainscreen
9. PPC aluminium drip
10. 200mm x 50mm timber joists
11. Sweet chestnut to u/s soffit, with stainless steel fixings to treated softwood packers, with insect mesh behind
12. 12mm cleft finish slate on RIW Tilesafe wet-room system on two layers, 12mm WBP glued and screwed at 300mm, centres on vapour check on two layers T & G WBP on treated s/w joists
13. 8mm expansion gap to perimeter of floor with grey mastic seal between door frame and slate
14. PPC Velfac 200 System double-glazed sliding window/door
15. Window/door system support brackets
16. 3mm pre-formed PPC aluminium gutter dressed in single ply membrane
17. Schoeck thermally broken connection section
18. Plastic overflow pipe with discharge visible from W-G.07
19. PPC aluminium 75mm dia. RWP



Balcony threshold detail

0 100mm

MEADOWVIEW, BEDFORDSHIRE PLATFORM 5 ARCHITECTS

01. Gabion ironstone wall

Courtyard wall. Robust quality and acoustic protection. Texture contrasts with timber cladding and render. Precise engineered aesthetic.
www.hy-ten.co.uk

02. Ironstone

From local quarry. Warm red/brown colour complements house. Grow bags between stones for drought-resistant sedum. Gaps shelter wildlife.
www.benniestones.co.uk

03. Slate flooring

Ground floor and bathrooms. Cleft finish provides texture and slip resistance. Staggered joints provide directional emphasis towards gardens.
www.kirkstone.com

04. Insulated Sto render

No movement joints needed. Accommodates differential movement between blocks and frame. StoLotusan self-cleaning paint due to proximity of trees to minimise maintenance.
www.sto.co.uk

05. Timber cladding

Untreated sweet chestnut rainscreen from East Sussex. Random lengths and open joints for horizontal emphasis, mitred and glued corners

Architect's choices

The slate plinth unifies house and gardens. The gabion wall grounds the house and contrasts with the light timber upper storey. A similar internal palette, with pink and purple highlights provides warmth and vibrancy. *Patrick Michell, partner, Platform 5 Architects*

continue lines round sides of building. Weathers to mottled warm silver grey. Internally expresses timber box in living room. Acts as acoustic baffle with black tissue-faced mineral wool backing.
www.in-wood.co.uk

06. Velfac 200 windows

RAL 7012 cold grey used externally complements existing London stock brick and engineering brick.
www.velfac.co.uk

07. Engineered timber flooring: first floor

Olive ash. Contrast between stripes of heartwood and lighter annual ring zones. Three coats UV cured white oil protects wood and unifies surface. Engineered floating floor on UFH system. Solid olive ash used on cantilevered stair.
www.admonter.at

08. Emerald Pearl Granite

Kitchen. Adds sparkle and depth, contrasting with flatter white unit doors and drawer fronts.
www.butterfieldnatstone.co.uk

09. Landscape format white semi-matt tiles

Bathrooms. Continues horizontal emphasis. Provides clean background for bathroom fittings.
www.mosa.nl

10. Accent paint – Dulux Russian Velvet 2

Complements grey-green of slate, adding warmth and vibrancy. Other walls: off-white RAL 9010.
www.dulux.co.uk

11. Spray lacquered MDF joinery and doors

Same colour as walls to provide continuity.
www.paintworks.uk.com

12. Allgood satin stainless steel lever handles

Comfortable operation, elegant simplicity. Allgood Omnilatch used for minimalist strike plates.
www.allgood.co.uk

13. Lighting Delta Light Microline 50

Recessed into timber cladding in living room to provide ambient lighting and animate surface.
www.deltalight.co.uk

14. Long grasses and lavender

Planted in swathes, giving house wharf-like feel.
www.crocus.co.uk

